

Windhoek Maschinenfabrik (1998) (Pty) Ltd is a Namibian Registered Company (Co. Reg. No. 98/325). Established in 1939, the company was taken over by the Government of Namibia in 1998 and is operating as a wholly owned commercial arm and subsidiary of the August 26 Holding Company (Pty) Ltd, an undertaking of the Ministry of Defense and Veteran Affairs.

VISION

To be a leading metal fabrication and technical servicing company

MISSION

To produce high quality metal products and innovative technical services

VALUES

INNOVATION

We endeavor to provide cutting-edge products and services to our customer

FLEXIBILITY

WMF will be highly responsive to market demands and will always align the business to the contemporary demands of the market

SAFETY

We adopt a zero-tolerance policy to injury in the workplace. Employee wellness is a critical enabler of productivity hence safety of our staff and customer is central to our business model

SUSTAINABILITY

We aim to build a business that outlives the generation ensuring that decision made today will enhance the business tomorrow

TEAMWORK

We all belong to the WMF family and each one's contribution is linked to the other. Working together is thus necessary to delivering on our mandate

Defence



Design, develop, assemble and the maintenance of Armored Personnel Carriers ,(APC) and soft skin vehicles (Military Trucks)

Target

- Manufacture and assemble +- 20 APC s per year
- Refurbish +- 30 APC's per year
- Service, Maintain and Repair +- 1000 vehicles per year

Engineering Services



Manufacturing of vehicle components, agricultural implements

Maintenance and spare parts

- OE Parts New Holland
- Non – OE parts (MF, JD,Ford, Fiat, Landini etc)
- Warranty Services
- Scheduled Services
- 24/7 Field Services
- Nanosat
- Radar
- Satellite Stations

Agriculture



Sales, Marketing and Maintenance of Tractors and Agricultural implements

Tractor and Implement Sales

- BPI implements
- Falcon haymaking
- Quantum sprayers and nozzles
- WMF manufactured implements
- Service, Maintain and Repair +- 500 tractors per year
- Manufacturing of implements and components
- Pivot
- Fencing
- Electric Fencing

Servicing, Repairs and Maintenance

MANUFACTURING/PRODUCTION

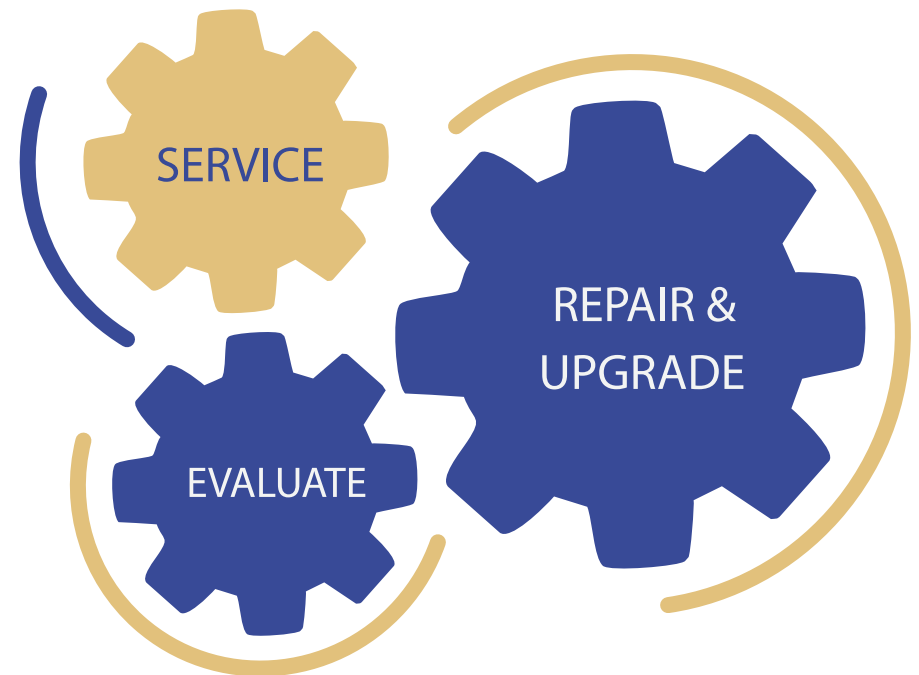
- Hard skin (armored) vehicles
- Soft-skin (sedans/ pickups/ trucks and buses) vehicles
- Agricultural equipment (tractors and implements)
- Construction vehicles (front loaders, bulldozers, graders)
- Assembly of APC's
- Manufacturing of components/implements
- Machining services
- Research and Development

REPAIRS

- Engines, transmission systems, fuel systems, brake systems, steering systems, suspensions, electrical systems and all repairs of vehicles and machineries.
- Panel beating and spray painting

MAINTENANCE

- Scheduled and unscheduled services of APC's, soft skin military vehicles and tractors
- Life enhancement/Upgrades
- Warranty and Spare part management services
- Training to Tractor operators, field marking and practical use of tractors and implements



FLEET MANAGEMENT SERVICES

- Scheduled and unscheduled services of APC's, soft skin military vehicles and tractors
- Life enhancement/Upgrades
- Warranty and Spare part management services
- Training to Tractor operators, field marking and practical use of tractors and implements



Spare Parts, Tools and Accessories

PROVISION OF SPARE PARTS

- Management of Spare parts store
- Stocking bit parts of vehicle spares and equipment
- Ordering and delivering of any vehicle spare parts

MANAGED MAINTENANCE SERVICES

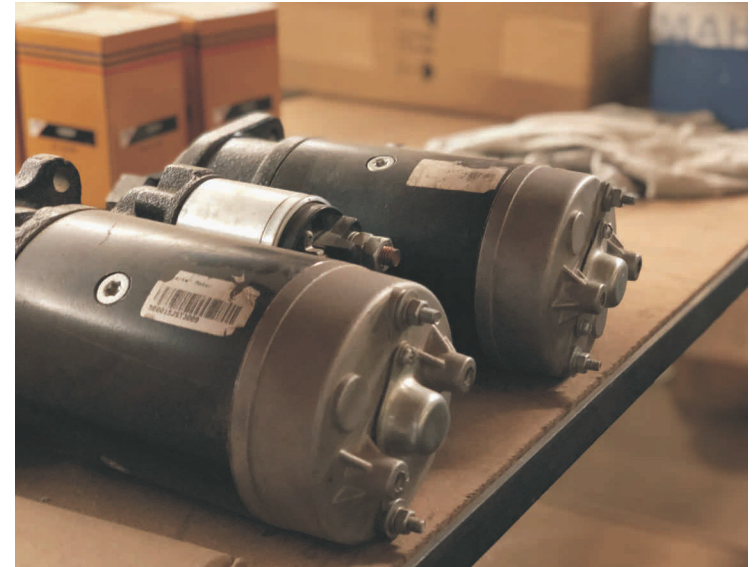
- Scheduled and unscheduled services of APC's, soft skin military vehicles and tractors
- Life enhancement/Upgrades
- Warranty and Spare part management services
- Training to Tractor operators, field marking and practical use of tractors and implements

WMF ADDITIONAL CAPABILITIES (1)

- Refurbishment of vehicles and trailers
- Welding and fabrication a Manufacturing of truck bodies and trailers
- Manufacturing of armored mine protected vehicles

WMF ADDITIONAL CAPABILITIES (2)

- Computer Numerical Control (CnC) milling and machining services
- Manufacturing of agricultural implements.
- Fencing, electrification and maintenance of livestock and game fences/farms.



Metal fabrication and boiler Making

PRODUCTION

- Assembly of APC's
- Manufacturing of components/implements
- Machining services
- Research and Development

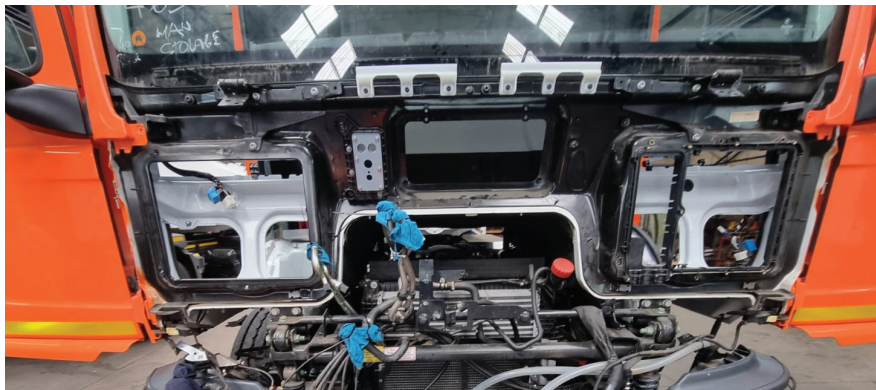


KEY FEATURES

- Latest Technolog: Ctutting-edge nano technology
- Modern Infrastructure: Sustainable and high-quality materials.
- Smart Systems: Optimize defficiency and energy usage.
- R&D Hub: Central for research and innovation.
- Eco-Friendly: Solar panels and drain water systems.

In house construction of a nano station in Grootfontein, the station is state of the are and comprises of latest technologies,systems.





KEY FEATURES

- Ballistic Protection: Armor plating to withstand small arms fire and shrapnel.
- Mine-Resistant Hull: V-shaped design to deflect mine explosions.
- All-Terrain Capability: Suitable for various terrains including off-road and urban environments.
- High Mobility: Powerful engine and advanced suspension system for enhanced performance.
- Seating Capacity: Room for a squad of soldiers.
- Weapon Mounts: Equipped for machine guns and other armaments.
- Advanced Communication Systems: Secure and reliable communication.
- Night Vision and Thermal Imaging: Enhanced visibility in low-light conditions.
- Run-Flat Tires: Enables continued movement even after tire damage.
- Modular Design: Customizable and upgradeable for different mission requirements.
- NBC Protection: Defense against Nuclear, Biological, and Chemical threats.

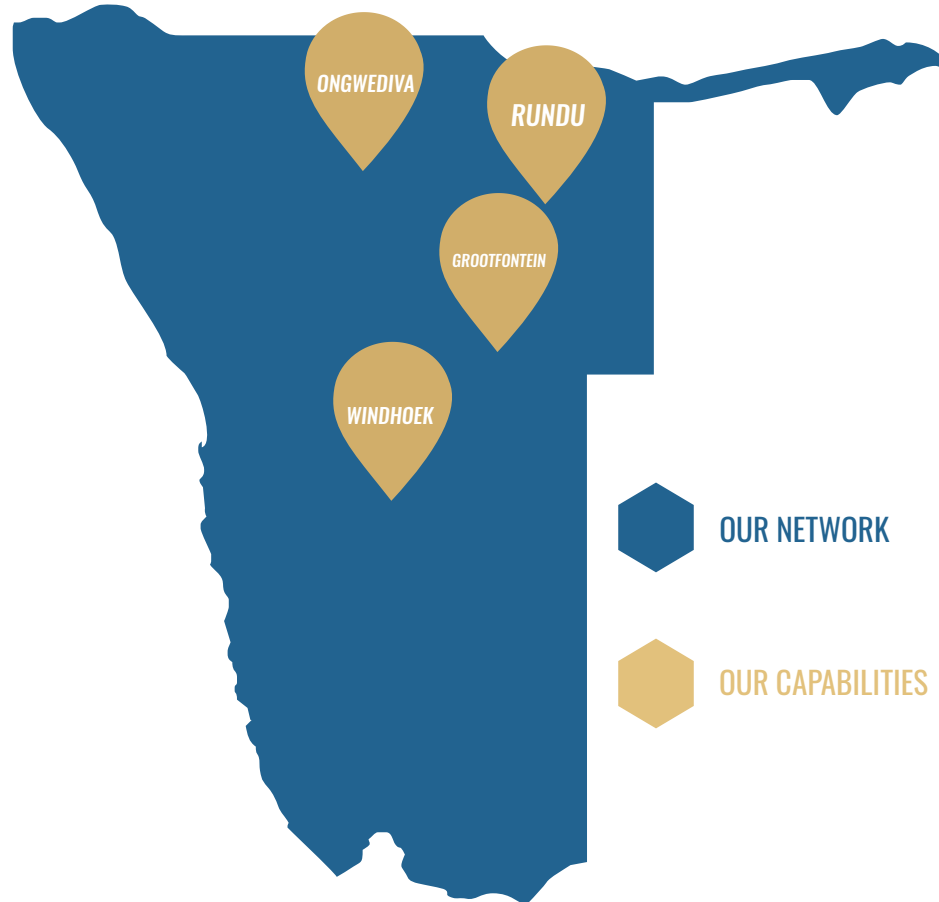




KEY FEATURES

- Durability: Built to withstand harsh conditions and heavy usage.
- High Payload Capacity: Designed to carry heavy loads efficiently.
- All-Terrain Capability: Suitable for various terrains including off-road.
- Powerful Engine: Provides high performance and reliability.
- Versatile Configuration: Can be adapted for multiple uses (e.g., cargo transport, troop transport).
- Advanced Suspension System: Ensures smooth travel over rough terrains.





MANPOWER

- WMF has qualified mechanics, auto electricians,
- Boilermakers, panel beaters and spray painters.

WMF PRESENCE IN THE COUNTRY

- WMF boasts of the main workshop in Windhoek, and
- Regional workshops in Grootfontein, Rundu and Ongwediva

MOBILITY

- WMF has the capacity to deploy technical mobile teams through-out the country for services, repairs and maintenance

Notes..

Notes..



13 Bessemer Street
Southern Industrial Area, Windhoek



P.O. Box 5013, Windhoek, Namibia



E-mail: info@wmf.com.na



Tel: +264 61 445 500



Fax +264 61 235 742

www.wmf.com.na

WINDHOEK MASCHINENFABRIK (1998) (PTY) LTD

